

Cole & Son



THE ARDMORE COLLECTION

Cole & Son

Cole & Son are delighted to present the Ardmore Collection, a range of new and exciting wallpapers in collaboration with Ardmore Ceramic Art.

Ardmore's charming and exuberant ceramic creations have both a narrative and a strong heritage rooted in African tradition and culture. It is this storytelling through the language of craft and craftsmanship which Cole & Son value and share.

The collection draws inspiration from Ardmore's colourful and quirky ceramics which celebrate Africa's exotic flora and majestic fauna: from rare birds to big cats, elephants, rhinos and mischievous monkeys; as well as the beautiful patterns of Zulu beadwork and woven basket ware.



Traditional motifs and intricate patterns have been meticulously redrawn in the Cole and Son design studio and transformed into a charming and sophisticated collection of wallpapers and borders and add a new dimension to the Cole & Son library.

Colour palettes are drawn from the natural landscape: from the chalky, ochred desert plains and sun-bleached shimmering outcrops to the vibrant fresh greens of water-kissed rainforests and exotic colourings of native flora and fauna. The result, a strikingly sophisticated collection of wallpapers that includes soft and subtle explorations of the majestic landscape as well as colourful creations capturing the vibrancy of traditional African culture.



"Having coveted Ardmore Ceramics for several years and being strongly drawn to their whimsicality and narrative, it was both a privilege and a delight to recreate these fabulous Ardmore stories onto wallpaper" – Shauna Dennison, Cole & Son Creative Director.

Shauna Dennison



ARDMORE CERAMIC ART



Ardmore Ceramic Art was established by Fée Halsted on Ardmore Farm in the foothills of the Drakensberg Mountains of KwaZulu-Natal, where she lived after obtaining her BA (Fine Arts) Honours degree. Here she met Bonnie Ntshalintshali, daughter of their housekeeper, whose polio meant that she was unable to work in the fields. Fée and Bonnie quickly developed a synergy and under Fée's mentorship, Bonnie's natural skills as an artist blossomed. Five years later, in 1990, Fée and Bonnie were jointly awarded the prestigious Standard Bank Young Artist Award, the first such artistic partnership to be recognised. Following this success Fée began to offer other local women the opportunity to train at Ardmore, producing pieces to generate income for the fledgling studio.

Fée, through necessity, developed the exuberant exotic style that has made Ardmore ceramics famous. "I made tiles and if one cracked, I'd stick a rabbit or bird on the top to hide it," she recalls. Their work broke from the ceramic conventions of the time: fired terracotta clay was painted with plaka paints, boot polish and oven blackeners. Glues and putty were also used. Later American Amaco paints and transparent glazes brought vibrant colour and fine painting style to the ceramics.

Several years later, following the death of her close friend and colleague Bonnie, Fée and her family moved to the Caversham Valley, relocating the studio and a museum built in Bonnie's name to a new spacious gallery and office.

The artists from the Ardmore studio are given training, direction, materials, a studio and a guaranteed market for their work, supported by a skilled marketing and administrative team. Over the years, Ardmore's artists have won numerous awards and exhibited widely in South Africa and around the world. Ardmore artworks feature in leading galleries and collections, including the Museum of Art & Design in New York, the Museum of Cultures in Basel, Switzerland, and the Tatham Art Gallery in Pietermaritzburg, South Africa. The acclaimed auction house Christie's has acknowledged Ardmore artworks as "modern day collectibles".



SAVUTI

The Savuti is one of Africa's most loved and well known national parks where hoopoes and hornbills call and sing, whilst baboons and chameleons sun themselves in flowering Coral Trees. This wonderful African garden has been recreated as a wallpaper in seven bold and distinctive colourings each offering a different look; a bright orange and charcoal with a monotone engraved feel, a duck-egg and old stone with faded and antique illustrative tones, and a series of three brightly coloured child-like colourings on grounds of cream, dark petrol and khaki

- Inspired by Africa's native flora and fauna
- Illustrative design, each element intricately hand drawn by C&S design studio
- 7 colourways offering a range of different décor options



109/1001 Orange



109/1002 Charcoal



109/1003 Stone Neutral



109/1004 Duck Egg



109/1005 Khaki Multi



109/1006 Dark Petrol Multi



109/1007 Cream Multi



(roll width x 2m length)

Collection	The Ardmore Collection
Pattern	Savuti
Roll dimensions	52 cm x 10m (20.5 ins x1 l yds).
Pattern repeat	76.2 cm (30 ins) Half drop.
Area	5.2 sq.m (56 sq.ft.).
Fire rating	EN 13501-1:2007+al:2009, b-s1,d0. Contract fr.
Care	☀ ~ 🧽 🧼

LEOPARD WALK

Leopards march left and right across this wallpaper; their tails forming patterns and rhythms associated with Zulu dance and music. Originally painted by Punch Shabalala, one of Ardmore’s oldest and most esteemed artists, Leopard Walk is a simple yet striking design offered in five colourings including soft greys and taupes, a striking black and white and a rich and moody charcoal with burnt orange, almost fire-lit leopards.

- Contemporary design featuring traditional African icon
- 5 colourways offering a range of different décor options



109/2008 Charcoal & Orange



109/2009 Olive & White







109/2010 Stone & Orange



109/2011 Black & White



109/2012 Stone

Collection	The Ardmore Collection
Pattern	Leopard Walk
Roll dimensions	52 cm x 10m (20.5 ins x 11 yds).
Pattern repeat	30.5 cm (12.2 ins) Straight match
Area	5.2 sq.m (56 sq.ft.).
Fire rating	EN 13501-1:2007+al:2009, b-s1,d0. Contract fr.
Care	   



(roll width x 2m length)

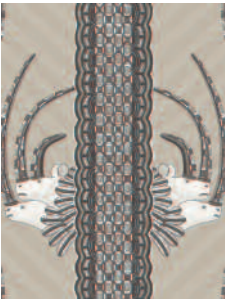
JABU

Named after one of Ardmore’s finest designers, Jabu Nene, this design takes its inspiration from the beautifully sculptural hand-coiled rhino vessels created by Somandla Ntshanlintshali. These vessels are then intricately painted by Jabu Nene herself and now form a part of Ardmore’s most well loved signature styles.

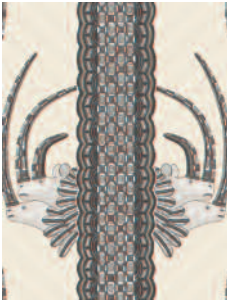
Our Cole & Son artists have used the markings on these pots to create a vibrant vertical stripe, out of which peek a pair of regal white rhinos complete with adorned horns and feathered ruffs.

This wallpaper contains a true African spirit and is presented in five striking colourings.

- Striking vertical stripe featuring regal white rhinos
- Offered in 5 elegant colourways



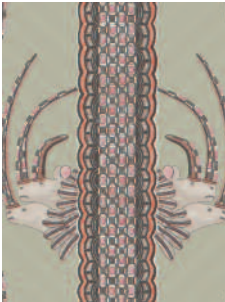
109/3013 Linen & Black



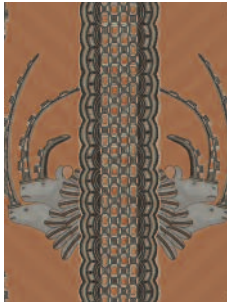
109/3014 Black & White



109/3015 Blue

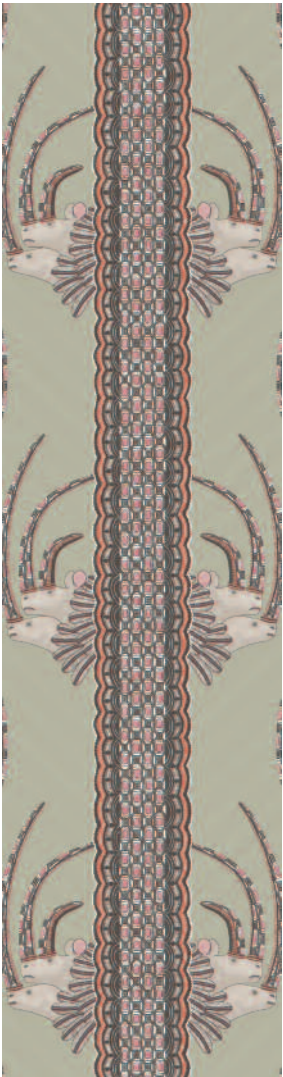


109/3017 Olive & Pink



109/3018 Tan

Collection	The Ardmore Collection
Pattern	Jabu
Roll dimensions	52 cm x 10m (20.5 ins x 11 yds).
Pattern repeat	68.5 cm (27.0 ins) Half drop.
Area	5.2 sq.m (56 sq.ft.).
Fire rating	EN 13501-1:2007+a1:2009, b-s1,d0. Contract fr.
Care	



(roll width x 2m length)

MATRINAH

One of the more classical designs within the collection, Matrinah, named after Ardmore designer Matrinah Xaba, reveals an arrangement of ornamental platters and dishes, all intricately patterned with birds and animals and edged with decorative borders and pie crust scallops. These in turn are placed on chalky grounds of olive, taupe, ivory, yellow ochre and pink featuring the softly silhouetted shapes of the vases from the Khulu Vases design.

- Intricately detailed design
- Softly silhouetted shapes of vases add texture and dimension
- 5 sophisticated palettes with softly textured metallics



109/4019 Black & White



109/4020 Stone & Silver



109/4021 Old Olive



109/4022 Ochre



109/4023 pink



(roll width x 2m length)

Collection	The Ardmore Collection
Pattern	Matrinah
Roll dimensions	52 cm x 10m (20.5 ins x 11 yds).
Pattern repeat	61.0 cm (24.0 ins) Straight match.
Area	5.2 sq.m (56 sq.ft.).
Fire rating	EN 13501-1:2007+al:2009, b-s1,d0. Contract fr:
Care	

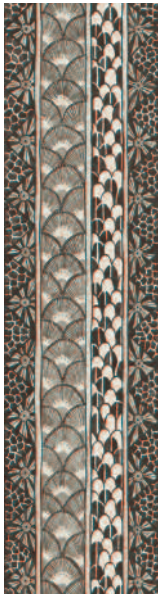
ARDMORE BORDER

Taken from the ornate detailing on a ceramic vase, this pretty border acts as a decorative edging to many of the papers contained within this collection. Designed to be hung both vertically and horizontally it is offered in three colourings of black and white, soft olive and a dramatic burnt orange and charcoal.

- 'Mix and match' with other Ardmore papers to create coordinated or contrasting décor statement
- Can be hung both vertically and horizontally
- 3 colourings offer variety of use



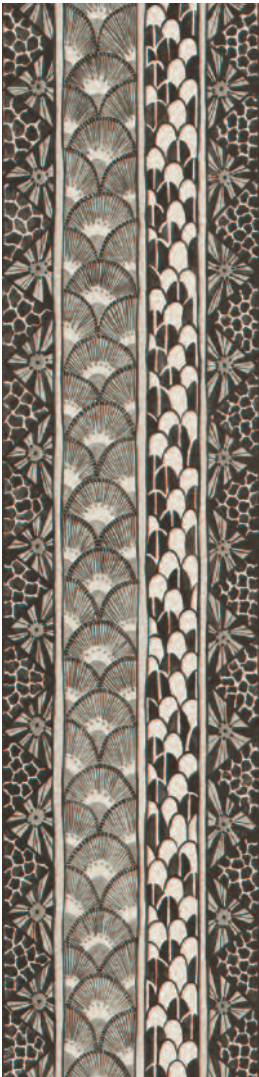
109/5024 Olive



109/5025 Black & White



109/5026 Black & Burnt Orange



(roll width x 2m length)

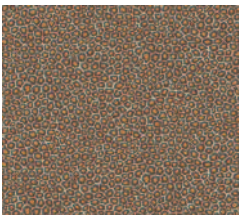
Collection	The Ardmore Collection
Pattern	Ardmore Border
Product code	109/5024
Colour	Olive
Roll dimensions	10.4 cm x 10m (4.1 ins x 11 yds).
Pattern repeat	52.0 cm (20.5 ins) Random match.
Area	1.1 sq.m (12 sq.ft.).
Fire rating	EN 13501-1:2007+al:2009, b-s1,d0, Contract fit.
Care	

SENZO SPOT

Inspired by the charmingly naïve patterning of giraffe spots created by young Ardmore artist Senzo Duma, Senzo Spot re-creates the age-old small scale animal print as a smart semi-plain wallpaper.

Gilded with small daubs of softly textured metallic or matt chalk, this effortlessly smart and contemporary design is offered in six colourings of stone and white, olive and gold, charcoal and ivory, soft taupe and gold, true leopard, charcoal and black and rich petrol and gold.

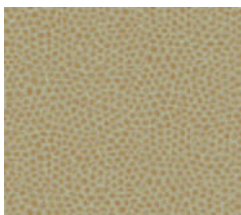
- Stylish, contemporary design
- 6 colourings gilded with small daubs of softly textured metallic or matt chalk.



109/6027 Brown & Gold



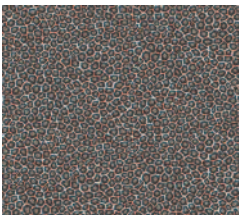
109/6028 True Leopard



109/6029 Olive



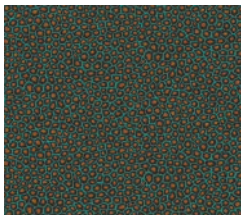
109/6030 Stone & White



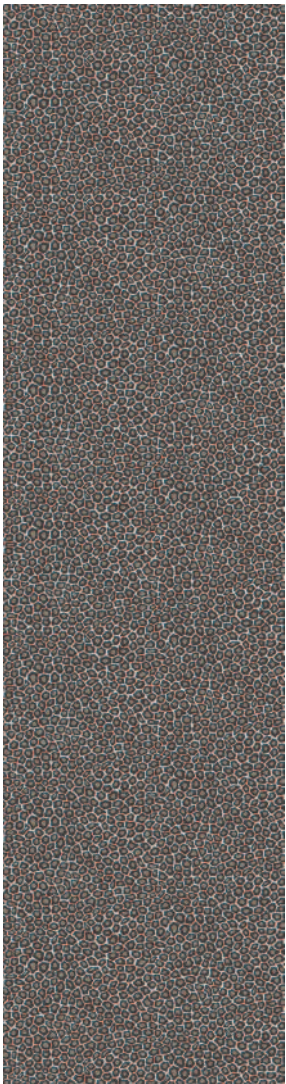
109/6031 Black & White



109/6032 Charcoal



109/6033 Petrol



(roll width x 2m length)

Collection	The Ardmore Collection
Pattern	Senzo Spot
Roll dimensions	52 cm x 10m (20.5 ins x 11 yds).
Pattern repeat	26.5 cm (10.5 ins) Half drop.
Area	5.2 sq.m (56 sq.ft.).
Fire rating	EN 13501-1:2007+al:2009, b-s1,d0. Contract fr.
Care	

SINGITA

Singita, which means ‘Place of Miracles’ is truly just that! This rich and abundantly patterned forest design has been painstakingly hand painted using the decorative plant motifs and foliage which adorn the dishes and bowls created by Ardmore artists over the years. This rich tapestry-like wallpaper, with its glimpses of artist Alex Sibande’s enigmatic animal travellers strolling through the undergrowth, will create a luxurious backdrop to any interior.

- 24 individual elements painstakingly drawn by hand to create patterned forest design
- 2 exotic colourways
- Rich tapestry-like design with dramatic presence
- Offset simple furnishing & fittings



109/7034 Green



109/7035 Dark Blue

Collection	The Ardmore Collection
Pattern	Singita
Roll dimensions	70 cm x 10m (27.6 ins x 11yds).
Pattern repeat	102.5 cm (40.4 ins) Half drop.
Area	7.0 sq.m (76 sq.ft.).
Fire rating	EN 13501-1:2007+a1:2009, b-s1,d0. Contract fr.
Care	☼ ~ 🚫 🚫



(roll width x 2m length)

SAFARI DANCE

This beautifully patterned wallpaper features a trio of elephants dancing horizontally across the African Plains. Intricately rendered, they are taken from a series of large decorated urns painted by Zinhle Nene which hold pride of place in the Ardmore museum. The colouring has been kept quite simple in order to show off the fine hand drawn elements – charcoal, sand and stone provide a softly speckled backdrop to black and white, soft mulberry and rust and cool chalky greys.

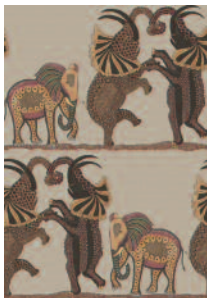
- Charming, playful depiction of iconic African animal
- 6 soft, neutral colour palettes enhance fine hand drawn elements
- Soft, neutral colour palettes enhance fine hand
- Elegant interpretation of traditional motif



109/8036 Neutral & Charcoal



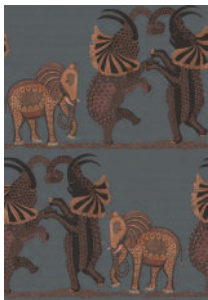
109/8037 Pale Stone & Grey



109/8038 Red & Linen



109/8040 Charcoal Black & White



109/8039 Charcoal & Reds

Collection	The Ardmore Collection
Pattern	Safari Dance
Roll dimensions	52 cm x 10m (20.5 ins x 11 yds).
Pattern repeat	76.2 cm (30.0 ins) Half drop.
Area	5.2 sq.m (56 sq.ft.).
Fire rating	EN 13501-1:2007+al:2009, b-s1,d0. Contract fr.
Care	



(roll width x 2m length)

ARDMORE CAMEOS

The Ardmore Cameos wallpaper is a very personal representation of a series of plates which were created by artist Nondumiso Ntshalintshali originally as a wedding gift to a ‘friend of Ardmore’. With each animal portrait, including a rather haughty zebra and a quizzical leopard, set against a backdrop of softly drawn giraffe spots, this delightful cartouche wallpaper is offered in four colourings of soft olive, grey, pale khaki and a striking black and white, and is printed at 68.5cm wide.

- Detailed cartouche wallpaper will delight and intrigue
- 4 stylish, soft colourways
- Wide width 68.5cm



109/9041 Stone & Green



109/9042 Green



109/9043 Black & White



109/9044 Grey



(roll width x 2m length)

Collection	The Ardmore Collection
Pattern	Ardmore Cameos
Roll dimensions	68.5 cm x 10m (27 ins x 11 yds).
Pattern repeat	76.2 cm (30 ins) Straight match.
Area	6.9 sq.m (74 sq.ft.).
Fire rating	EN 13501-1:2007+a1:2009, b-s1,d0. Contract fr.
Care	

NARINA

This wallpaper shares its name with the beautiful Narina Trogon Bird, native to Kwa-Zulu Natal in South Africa. Derived from the detailed patterning found on many Ardmore bowls and vases, our Cole & Son artists have created a soft watercoloured geometric design using the stylised feathers of the Narina bird to produce a subtle yet quirky semi-plain wallpaper. Offered in six colourings including soft neutrals alongside a vibrant burnt orange, leaf green and moody charcoal, this quirky paper can be used to complement other designs within the collection.

- Soft watercolour geometric offer subtle yet striking semi-plain wallpaper
- ‘Mix & Match’ with other Ardmore papers to create coordinated or contrasting décor statement
- 6 exquisite colourways appeal offer variety



109/10045 Leaf Green



109/10046 Charcoal



109/10047 Soft Grey



109/10048 Black & White



109/10049 Linen



109/10050 Burnt Orange

Collection	The Ardmore Collection
Pattern	Safari Dance
Roll dimensions	52 cm x 10m (20.5 ins x 11 yds).
Pattern repeat	76.2 cm (30.0 ins) Half drop.
Area	5.2 sq.m (56 sq.ft.).
Fire rating	EN 13501-1:2007+al:2009, b-s1,d0. Contract fr.
Care	



(roll width x 2m length)

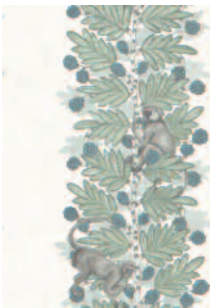
ACACIA

The Acacia tree is an enduring sight in Africa with its bright yellow ‘fluffball’ flowers, and holds warm memories for Ardmore founder Fée Halsted. Having always had monkeys around her as a child, these humorous animals full of wit, pranks and intelligence have created a soft spot in her heart, and in turn have provided the inspiration for this striking new conversational wallpaper. Designed to create a wide stripe effect, this paper is subtle yet will add drama, especially with the addition of our two charming pranksters.

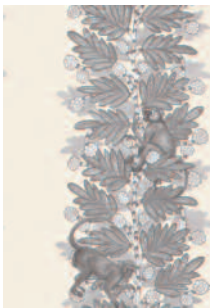
- Subtle yet striking with dramatic effect
- Create a wide stripe effect
- 5 soft, tonal colourways



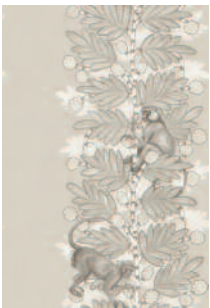
109/11051 Green & Coral Berries



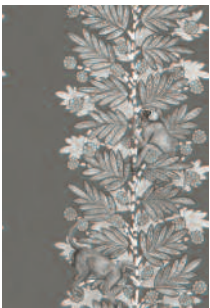
109/11052 Blue & Green



109/11053 Grey & White



109/11054 Stone & White Berries



109/11055 Charcoal & Silver



(roll width x 2m length)

Collection	The Ardmore Collection
Pattern	Acacia
Roll dimensions	52 cm x 10m (20.5 ins x 1 l yds).
Pattern repeat	76.2 cm (30 ins) Half drop.
Area	5.2 sq.m (56 sq.ft.).
Fire rating	EN 13501-1:2007+a1:2009, b-s1,d0. Contract fr.
Care	

KHULU VASES

Khulu, meaning ‘most important’, is a very apt name for this grand design featuring classical vases entwined with leopards, parrots, lions and other African animals. This fabulous wallpaper with its water-coloured paintings pays tribute to those renowned vessels recognised today as ‘modern day collectables’ by auction houses such as Christie’s, Bonhams and Sotherbys and which are displayed in galleries and private collections around the world.

- Comprising 6 intricately detailed vases each painstakingly painted in watercolour
- 4 fresh, vibrant colourways
- Contemporary design rich in detail



109/12056 Green & White



109/12057 Cream & Multi



109/12058 Midnight



109/12059 Blue & White



(roll width x 2m length)

Collection	The Ardmore Collection
Pattern	Khulu Vases
Roll dimensions	68.5 cm x 10m (27 ins x 1 l yds).
Pattern repeat	68.5 cm (27.0 ins) Third drop.
Area	6.9 sq.m (74 sq.ft.).
Fire rating	EN 13501-1:2007+a1:2009, b-s1,d0. Contract fr.
Care	

ZAMBEZI

Zambezi features a flotilla of boats, originally sculpted by Sotho artist Benet Zondo, captained by an array of animals all floating gently down the Zambezi river in Zimbabwe. Inspired by Operation Noah, a mission led by people in boats to save drowning animals when the Zambezi river flooded into Lake Kariba in the 1960s, this delightful wallpaper will be loved by children and adults alike. Softly coloured zebras, monkeys, elephants and hyenas all feature as do the occasional crocodile and haughty flamingo.

- Beautiful, hand illustrated conversational design
- Sophisticated soft colour palettes showcase intricate detail



109/14062 Neutral



109/14063 Multi-coloured



(roll width x 2m length)

Collection	The Ardmore Collection
Pattern	Zambezi
Roll dimensions	70 cm x 10m (27.6 ins x 11 yds).
Pattern repeat	102.1 cm (40.2 ins) Half drop.
Area	7.0 sq.m (76 sq.ft.).
Fire rating	EN 13501-1:2007+a1:2009, b-s1,d0. Contract fr.
Care	

ZULU BORDER

Inspired by the pedestal base of a ceramic vase, this striking leopard spot border design has been created to be hung horizontally around the base of a wall but as a further option it can be hung vertically as a reverse match, to create a dramatic and opulent wide graduated stripe. Featuring an ornamental 'moulded' edge atop a softly graduated band of leopard spot markings, this border design will be a striking addition to any interior.

- Dramatic and opulent wide graduated stripe
- Features ornamental 'moulded' edge
- 'Mix & Match' with other Ardmore papers to create coordinated or contrasting décor statement
- Can be hung vertically around base of wall or vertically as a reverse match



109/I 3060 Red & Brown



109/I 3061 Black & White



(roll width x 2m length)

Collection	The Ardmore Collection
Pattern	Zulu Border
Roll dimensions	68.5 cm x 10m (27 ins x 1 l yds).
Pattern repeat	76.2 cm (30 ins) Random match.
Area	6.9 sq.m (74 sq.ft.).
Fire rating	EN 13501-1:2007+A1:2009, b-s1,d0. Contract fr.
Care	